

**SIEMENS**

**SIEMENS**



2015  
NEW

[www.siemens.com/buildingtechnologies](http://www.siemens.com/buildingtechnologies)

# Cerberus ECO

enjoy protecting

## Product Brochure

[siemens.com/buildingtechnologies](http://siemens.com/buildingtechnologies)



## Cerberus ECO enjoy protecting

Lives and businesses deserve reliable protection from the risk of fire, and in Siemens' Cerberus ECO you can benefit from such protection by the system's exceptionally smart and powerful fire detection product series. Cerberus ECO has specifically been designed with small to medium premises in mind - including commercial buildings, hotels, shopping arcades, residential and a host of similar enterprises.

With more than 160 years of Siemens fire safety expertise to draw upon, Cerberus ECO incorporates key state-of-the-art global technologies that are second to none. The products and system adopt simple maintenance and operation design concepts in order to keep installation and commissioning as straightforward as possible. Cerberus ECO delivers dependable fire detection and alarm signalling, while maximising the protection of individuals, buildings and assets.

# ECO product range

## Smart and designed for simple installation and maintenance

### Designed for simple installation, maintenance and operation (SIMO design concept)

Tailored for the needs of users in small to medium sized businesses for simple, cost-efficient protection, Cerberus ECO has adopted simple installation, maintenance and operation design concepts for the products and system that take into account the complete working cycle of installers and users.

### International quality product

Cerberus ECO has been specially developed by a dedicated SMART R&D team based in China, a strong centre of competency for SMART products (Simple, Maintenance-friendly, Affordable, Reliable, Timely-to-market). This ECO product series incorporates key state-of-the-art global technologies and system architecture, while complying with Siemens' high quality standards.

### Complete product range - A wide range of applications

Cerberus ECO's compact and complete range of cost-efficient fire safety products - tailor-made to protect your staff, buildings and assets - comprises fire detectors as well as control panels and peripheral equipment such as manual call points, and input and output modules. Cerberus ECO is the reliable choice for a wide range of applications whether they are for commercial buildings, hotels, shopping arcades, commercial, residential or similar enterprises.

### Putting you first

#### - Service is part of the package

Siemens recognises that pre-sales and after-sales services are essential for reliable fire detection products, which is why Cerberus ECO comes with a series of valuable service offerings for both installers and users. To support users to effortlessly install and operate the system, Siemens offers a customer hotline, e-training, and quick and reliable logistics.

### Powerful networking

Cerberus ECO installation grows with you. So should you want to extend or convert your building, Cerberus ECO installation can be easily expanded.

### Free wiring topology

Cerberus ECO enables you to achieve higher cost-effectiveness by optimising installation and maintenance costs via free wiring topology.

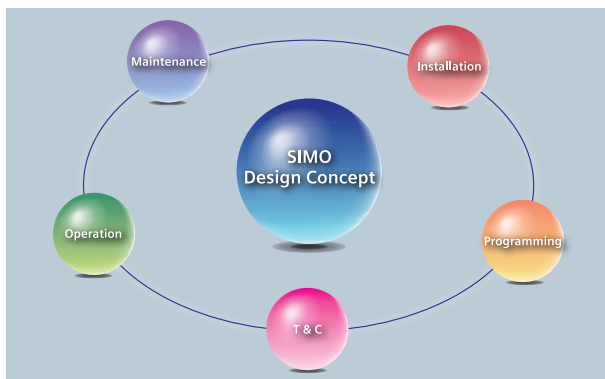
### Smart devices

#### - Innovative features

Devices in the Cerberus ECO product series are equipped with numerous powerful features for easy installation and commissioning. The dust and dirt compensation feature and 'Sticker method' installation for detectors, 360-degree viewable alarm indicator, PC-free commissioning on panel with large easy-to-read LCD monitor, and easy-to-use menu button on panel, are just some of the innovative features of this system.

### Highlights

- Reliable product – incorporates key state-of-the-art global technologies and Siemens' high quality standards
- High cost-effectiveness – affordable by small to medium sized businesses
- Smart design – for simple installation, maintenance and operation
- User-friendly operation – expandable and compatible with future developments





# FC18 Control Panel Range

## Highlights

- Highly user-friendly panel range with three panel options.
- Quick and accurate programming via PC or on panel with large 320 x 240 pixels LCD monitor.
- Easy-to-use menu button to call out pull-down menu for swift testing, commissioning, configuration, event management, monitoring and report handling.
- Flexible file handling simplifies commissioning and reduces costs.
- Easy programming and commissioning enabled by innovative tools and functions.

## Highly user-friendly panel range

A new range of control panels (FC18) with three panel options - FC1820 ( $\leq 252$  points), FC1840 ( $\leq 504$  points) and FC186x (504 - 1,512 points) - are offered in the highly user-friendly Cerberus ECO product series, which makes installation, operation, integration and maintenance easier than ever.

Cerberus ECO provides the flexibility you need for system expansion, modernisation and backward-compatibility innovation, and enables you to achieve higher cost-effectiveness by optimising installation and maintenance costs with flexible wiring technology. This new panel stubs on loop as well as star style field bus topology and free polarity wire connection. Each panel can monitor and operate from 252 to 1,512 devices and enables networking with up to 32 panels.

## Programming - PC or Panel

The Cerberus ECO FC18 control panel range supports programming via PC or panel. Equipped with a large 320 x 240 pixels LCD monitor, programming work is rapid and accurate.

## Easy-to-use - Menu button on panel

An easy-to-use menu button is available on the FC18 control panel range. Testing, commissioning, configuration, event management, monitoring and report handling are all easily accomplished by simply pushing the menu button to call out the user-friendly pull-down menu.

## Flexibility - File handling

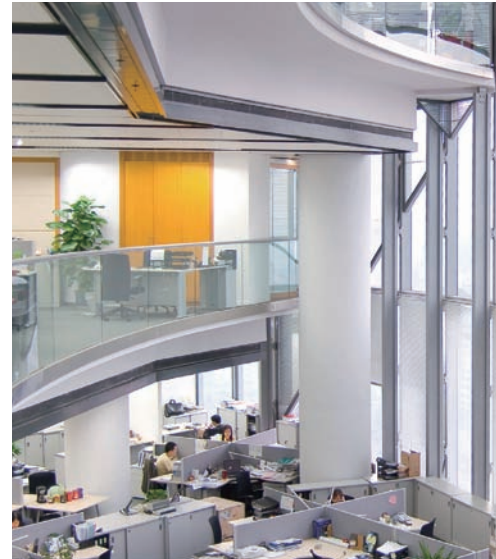
Cerberus ECO incorporates a series of features to support flexible file handling to reduce commissioning costs:

- Configuration file can be exported to and imported from Excel file.
- No re-configuration / re-download of configuration file necessary following firmware version updates.
- 'Download & Upload priority' enables uninterrupted download and upload process.
- History record can be uploaded from panel to PC to accommodate 'Expandable archiving'.
- 'Customer report' file with information on all devices mounted on site can be exported.

## Easy programming and commissioning

Innovative tools and functions to simplify and reduce the time for programming work, such as:

- 'Unique ID code' for each peripheral enables easy localization and lifecycle identity.
- 'Logical expression name' to enhance readability.
- 'Group programming' function to simplify logic relations.
- 'Multi-device-select' function enables assignment of multiple devices in one group.
- 'System copy & paste' function for easy merging of configurations by different technicians.



## FD181 device range

### Complete range of devices

A complete range of devices (FD181) are offered in the Cerberus ECO fire detection product series, including smoke and heat detectors. Dual-channel input module and dual-channel input/output module with open/short circuit monitoring, floor repeat terminal for easy access of alarm information, re-settable manual call point, collective input module, and an isolator module are also provided as part of the comprehensive package.

### Fast & Accurate fire detection

Benefit from Siemens advanced communication protocol from global R&D team, which assures quick identifying of fire dangers and reliable signal transmission.

### Logical 'Sticker method' installation

The detectors are designed for easy commissioning by logical 'Sticker method' installation. Each detector has a unique device ID sticker attached at the back that can be positioned on project drawings for quick and accurate testing and commissioning.

### Protective caps and dust/dirt compensation

Eye-catching protective cap in red is available for the protection of smoke detector during the installation period. Together with a dust/dirt compensation feature, greatly facilitate smoother installation work and reduce costs.

### Strict enforcement of environmental standard

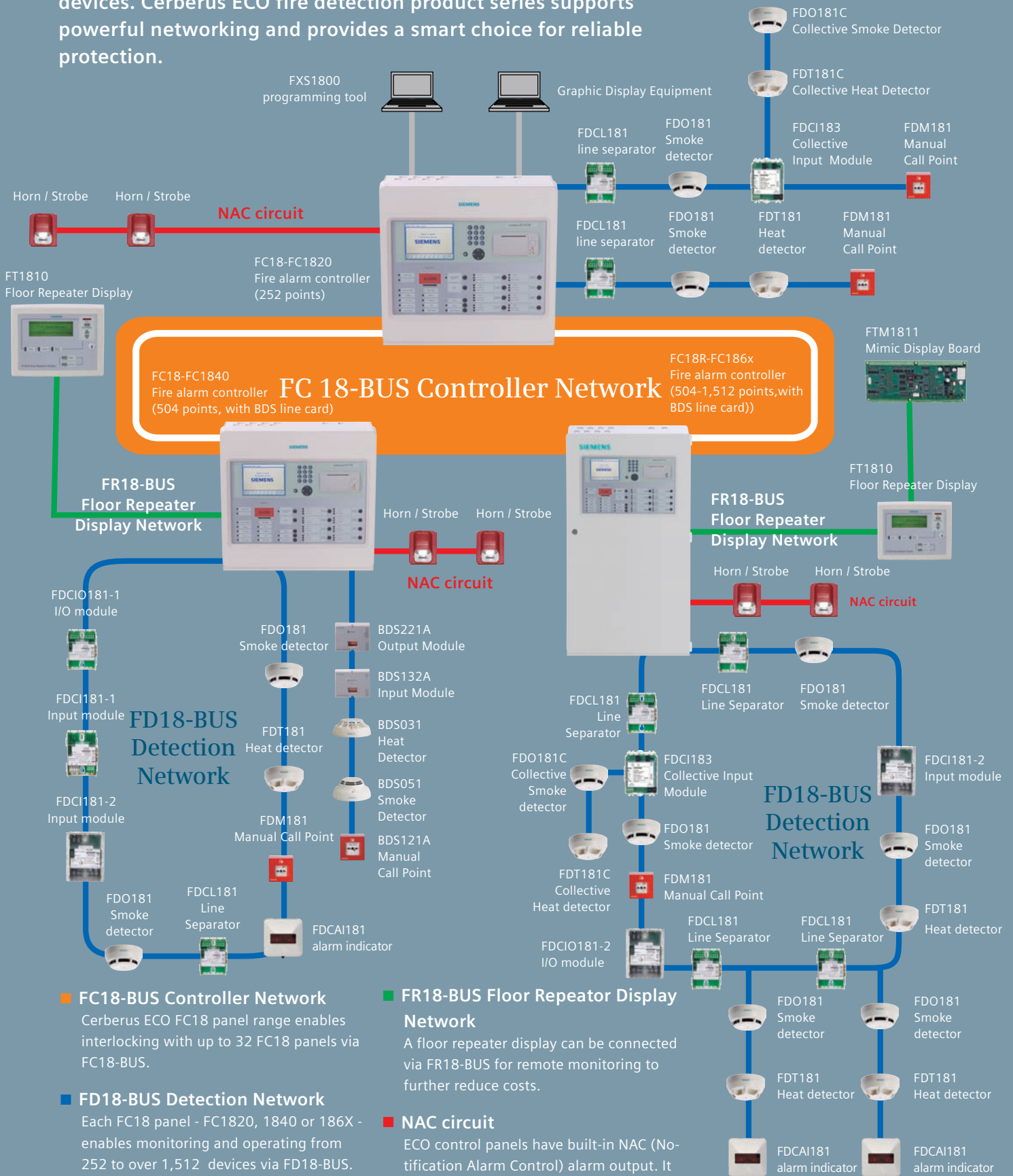
In deference to the environment, all detectors are RoHS compliance.

### Highlights

- Advanced communication protocol assures fast & accurate fire detection
- Complete range of devices with smart designs
- Logical 'Sticker method' installation via unique device ID sticker
- Detector protective caps and dust compensation feature facilitate smoother installation and reduce costs

# Cerberus ECO System overview

Powerful control panels, smart detectors and complete peripheral devices. Cerberus ECO fire detection product series supports powerful networking and provides a smart choice for reliable protection.




**FC18-BUS Controller Network**  
Cerberus ECO FC18 panel range enables interlocking with up to 32 FC18 panels via FC18-BUS.

**FD18-BUS Detection Network**  
Each FC18 panel - FC1820, 1840 or 186X - enables monitoring and operating from 252 to over 1,512 devices via FD18-BUS. This new panel range supports from one loop to eight loops configuration, stub on loop as well as star style field bus topology and free polarity wire connection.

**FR18-BUS Floor Repeater Display Network**  
A floor repeater display can be connected via FR18-BUS for remote monitoring to further reduce costs.

**NAC circuit**  
ECO control panels have built-in NAC (Notification Alarm Control) alarm output. It can be directly connected to notification alarm devices such as horn or strobe.

# Cerberus ECO at a glance

Control panels						
						
Type	FC1861 / FC1862 / FC1863		FC1840		FC1820	
Description	Fire alarm controller		Fire alarm controller (504 points)		Fire alarm controller (252 points)	
Features	Loop, stub on loop or star style field bus topology, free polarity wire connection, interlocking up to 8 panels, easy-to-use menu button, programmable from PC or Panel					
	2 loops / 4 loops / 6 loops 504 devices / 1,008 devices / 1,512 devices		2 loops, 504 devices		1 loop, 252 devices	
Detectors						
						
Type	FDO181		FDT181		FDO181C	
Description	Addressable Smoke detector (with protective red cap)		Addressable heat detector		Collective smoke detector	
Features	Easy commissioning by 'Sticker method' installation, with dust compensation		Easy commissioning by 'Sticker method' installation		Collective detector, no address setting, polarity free connection	
	Addressable modules					
						
Type	FDCI183	FDCI181-2	FDCIO181-2	FDCL181	FDCI181-1	FDCIO181-1
Description	Collective Input Module	Input module	I/O module	Line Separator	Input module	I/O module
Features	1 monitored inputs as collective detector connection	Dual-channel Input	Dual-channel Input/Output	-		
	Resettable manual call point		Mimic Display Board		Floor repeater display	
						
Type	FDM181		FTM1811		FT1810	
Description	Manual Call Point		Mimic Display Board		Floor Repeater Display	
Features	With reset function		60 outputs for LED activation		Connected via FR18-BUS for remote monitoring	
	Alarm indicator					
						
Type	FDCAI181					
Description	Alarm indicator					
Features	Indicate quickly the source of an alarm signal					

Siemens Switzerland Ltd  
Infrastructure & Cities Sector  
Building Technologies Division  
International Headquarters  
Gubelstrasse 22  
6301 Zug  
Switzerland  
Tel +41 41 724 24 24

The information in this document contains general descriptions of technical options available, which do not always have to be present in individual cases. The required features should therefore be specified in each individual case at the time of closing the contract.

© Siemens Switzerland Ltd

#### **Answers for infrastructure.**

Our world is undergoing changes that force us to think in new ways: demographic change, urbanization, global warming and resource shortages. Maximum efficiency has top priority – and not only where energy is concerned. In addition, we need to increase comfort for the well-being of users. Also, our need for safety and security is constantly

growing. For our customers, success is defined by how well they manage these challenges. Siemens has the answers.

**“We are the preferred partner for energy-efficient, safe and secure buildings and infrastructure.”**